

**Board of Directors  
Chairman**

Academic Board  
Mr Harnek Singh (Chairman)

Exam Board  
Mr Harnek Singh (Chairman)

**General Manager  
Jacklyn See**

Student Consultative  
Committee

**MANAGEMENT TEAM**

**Accountant**

**Director  
Sales & Marketing**

**Head  
Operations**

**Academic Director/Mgmt Rep  
(Head-QS&A/ Acad D&O/ HR  
Planning & Dev/ Examination)**

Accounts  
Executive

HR  
Executive

SS-Processing

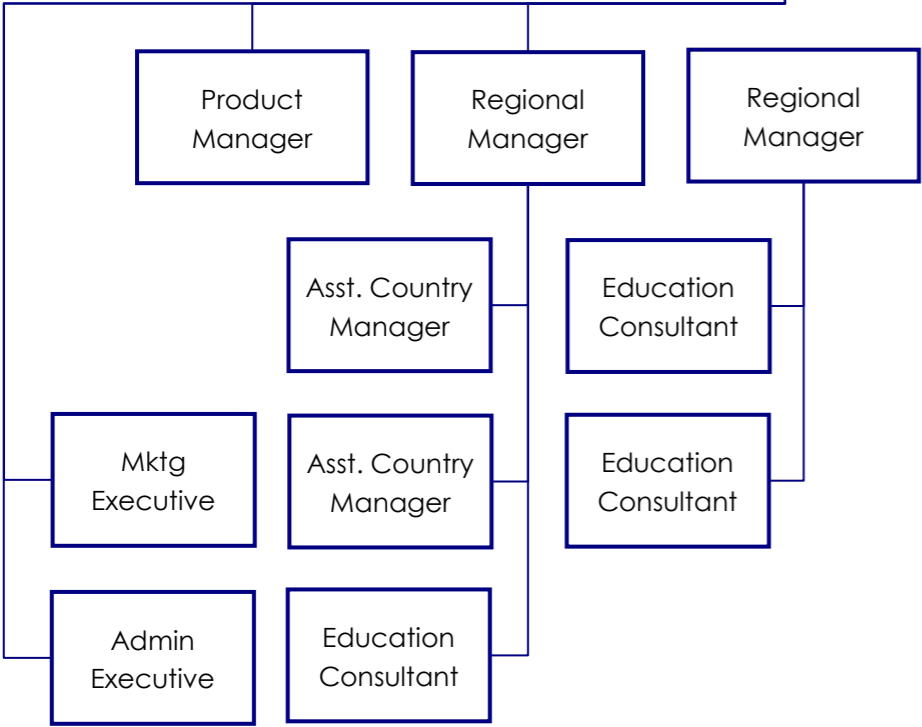
**HOS-SLAN**

**HOS-SOTH**

**HOS-SECCE**

**HOS-SENG**

**HOS-SBIZ &  
SLOG**



SS-Bursar

SS-Attendance & Events

SS-Admin & Cust. Service

SS-Facilities & Funding Processing

Pastoral Counselling Services

Senior Lecturer

Lecturer

Associate Lecturer/s

Senior Lecturer

Lecturer

Associate Lecturer/s

Project/IA Officer

Senior Lecturer

Lecturer

Associate Lecturer/s

Practicum Coordinator

External Exam Moderators

Senior Lecturer

Lecturer

Associate Lecturer/s

Exam Officer

Senior Lecturer

Lecturer

Associate Lecturer/s

Senior Lecturer

Lecturer

Associate Lecturer/s

*^Admin & Mktg Exec serves to support the entire Sales & Marketing Team*